


CMAP ON TO 2050 Legislative Framework

DRAFT



CMAP

HELPING
COMMUNITIES
PROSPER



Building on the award-winning GO TO 2040 comprehensive regional plan, in October 2018 the Chicago Metropolitan Agency for Planning (CMAP) adopted ON TO 2050, a new plan that recommends strategies for sustainable prosperity across all 284 communities in the Chicago area.

Implementing ON TO 2050 depends on support from both the State of Illinois and the federal government. These entities allocate billions of dollars each year to maintain the transportation system, promote economic development, strengthen our communities, and maintain and preserve natural resources, among other programs and initiatives. However, both the state and federal government face ongoing fiscal challenges that too often crowd out these priorities.

CMAP's Legislative Framework describes the agency's legislative policy positions organized around the 14 broad goals included in ON TO 2050. The document is intended to guide and inform legislators in Springfield and Washington, the Governor of Illinois, state and federal agencies, and regional partners. CMAP is most interested in legislative initiatives that have regional or statewide impacts, or those that could serve as precursors to broader, more comprehensive legislation. This framework's recommendations reflect the regional nature of CMAP's policy and planning work, as well as the agency's role in decision making within the state of Illinois.

ON TO 2050 includes three overarching principles, which are reflected in policy positions throughout this framework. These principles should guide policy and legislation to ensure sustainable growth and prosperity for all regional residents to 2050 and beyond.

Inclusive Growth: *Growing our economy through opportunity for all.*

Resilience: *Preparing for rapid changes, both known and unknown.*

Prioritized Investment: *Carefully target resources to maximize benefit.*

This detailed framework accompanies shorter state and federal legislative agendas that focus on specific legislative priorities. See more at www.cmap.illinois.gov/updates/legislative.

Community

State and federal policies play an important role in creating and sustaining the vibrant communities that help the region thrive. Investing in areas with transportation and economic assets, as well as communities that have been left behind, and supporting careful growth in emerging areas is imperative to help the entire region prosper.



Strategic and sustainable development

State and federal policies can foster fiscally prudent and resilient development that leverages the region's extensive infrastructure, diverse communities, and economic assets. Strategic investment in new development — and the new infrastructure required to support it — is imperative in a climate of constrained resources. From 2000-15, the region expanded its developed footprint by nearly 12 percent, an area equal in size to the city of Chicago. Over the same period, employment remained flat, population increased by 4.6 percent, and many opportunities for infill development remained untapped. Significantly more land was developed than preserved as open space. A thoughtful, holistic approach to development can help all parts of the region thrive. Particular attention must be focused on communities that are rich with potential yet suffer from long-term disinvestment. State and federal investment, targeted programming, and policies can facilitate rebuilding communities and careful expansion of our built environment.

CMAP supports federal and state legislation that spurs fiscally sustainable development and revitalizes existing infrastructure.

CMAP supports federal and state policies that catalyze growth in disinvested areas by refocusing regulations, programs, and incentives.



Reinvestment for vibrant communities

Communities' needs across the region are shifting: The population overall is growing older and more diverse, businesses' location preferences are changing, and more residents want to live in walkable communities. To achieve local goals, strong and vibrant places will have to offer a range of housing, transportation, amenity, and employment options. For example, compact development patterns support cost-effective public transit service and also facilitate walking and biking, and these options, in turn, improve mobility and public health, and also reduce greenhouse gas emissions. State and federal policymakers can ensure prioritized investments reduce infrastructure costs and promote fiscal sustainability.

CMAP supports federal and state policies that promote infill development of compact, vibrant communities with robust multimodal transportation options and transit-supportive land uses.

CMAP supports federal and state initiatives that foster market-driven housing policies, match regional and local housing supply with options that residents want, and promote development of diverse housing types.

CMAP supports federal and state programs that revitalize land through the redevelopment process — such as investments in brownfield remediation — offering communities the opportunity to enhance performance of the built environment or increase access to open space and natural assets.

Development that supports local and regional economic strength

The region needs a tax system that provides ample opportunity for local governments to generate revenue that supports their plans, goals, and desired development patterns and their ability to adapt to changing local economic conditions. State policymakers must provide support for industries that connect the region to the global economy, and foster local cooperation on economic development. In addition, lawmakers should seek changes in tax policies at the state and local level that support more development types and provide local governments with more paths to success. These strategies can also reduce competition and overbuilding of some development types, lowering costs and improving fiscal outcomes for the region.

CMAP supports the State of Illinois expanding the sales tax base to additional services in a manner that helps communities create a more balanced land use mix, helps ensure those who make similar incomes pay similar taxes, minimizes economic distortions, and mitigates the cascading nature of sales taxes.

CMAP supports the State of Illinois reforming state revenue disbursement criteria to reduce wide divergences in receipts across municipalities, allowing each municipality to support its own desired mix of land uses, and adapt to changing development patterns.

CMAP supports the State of Illinois adhering to fiscally sustainable practices to ensure a stable business climate and guarantee the reliability of state support to the region, including for local governments, transit agencies, and nonprofit service providers.

CMAP supports the State of Illinois approving statutory changes that allow non-home rule governments to impose additional types of user fees.

Prosperity

Sustaining broad economic growth requires improving metropolitan Chicago's business environment to enable industries and workers alike to compete globally and prosper locally.



Robust economic growth that reduces inequality

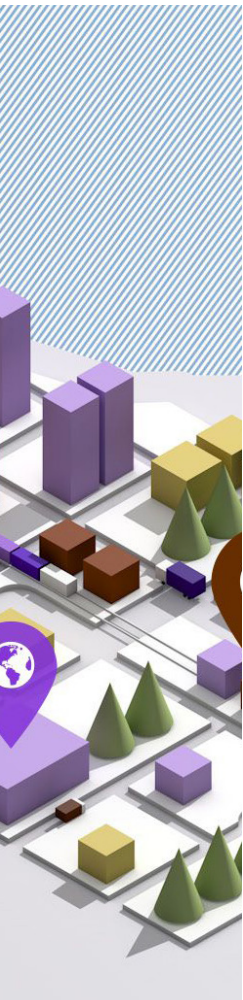
Metropolitan Chicago is endowed with extensive assets, including its people, industries, educational and research institutions, infrastructure, and geographic location. But its economic output increased just 0.9 percent annually during 2001-17, coupled with just 0.2 percent annual employment growth. In particular, black residents were the hardest hit residents during the 2007-09 recession, and have been the slowest to recover from its effects posting higher unemployment rates, lower workforce participation, and large declines in household income. As our prolonged slow growth lags behind peer regions, residents, primarily lower- and moderate-income households, are leaving to seek economic opportunity elsewhere. Advancing the state's economic goals requires action now to bolster a range of private and public initiatives already underway on a regional level. ON TO 2050 seeks to support pathways for upward economic mobility and our specialized industry clusters — groups of related businesses with historic roots and competitive advantages in the region. By prioritizing smart, inclusive strategies, state and federal policymakers can ensure that metropolitan Chicago remains a destination for diverse business activity, innovation, and talent.

CMAP supports federal and state policies, programs, and funding for cluster-oriented development and other initiatives that bolster globally competitive industries.

CMAP supports federal and state resources that further the development, implementation, and expansion of career pathway programs.

CMAP supports federal and state investment in the state's talent pool through robust and reliable funding for higher education and workforce development.

CMAP supports State of Illinois strategic planning for its distinct regional economies, allocating resources and developing policies to reflect their scale, opportunities, and challenges.



Responsive, strategic workforce and economic development

Today's economy has grown increasingly complex, transformed by technological change, global competition, emerging industries, and evolving consumer demand. As a result, metropolitan Chicago needs to strengthen itself for both anticipated and unforeseen economic shifts. Effective public policies and investments can prioritize limited government resources in collaboration with high-capacity private and nonprofit partners. Yet workforce and economic development decisions frequently lag behind the pace of change, and insufficient data and performance information can limit the economic benefit of public expenditures. Achieving stronger growth will require coordinated, sustained investment of limited resource in initiatives rooted in the policy and planning needs of particular communities and industries.

CMAP supports federal and state investment in longitudinal workforce and education data systems to inform more responsive public policy.

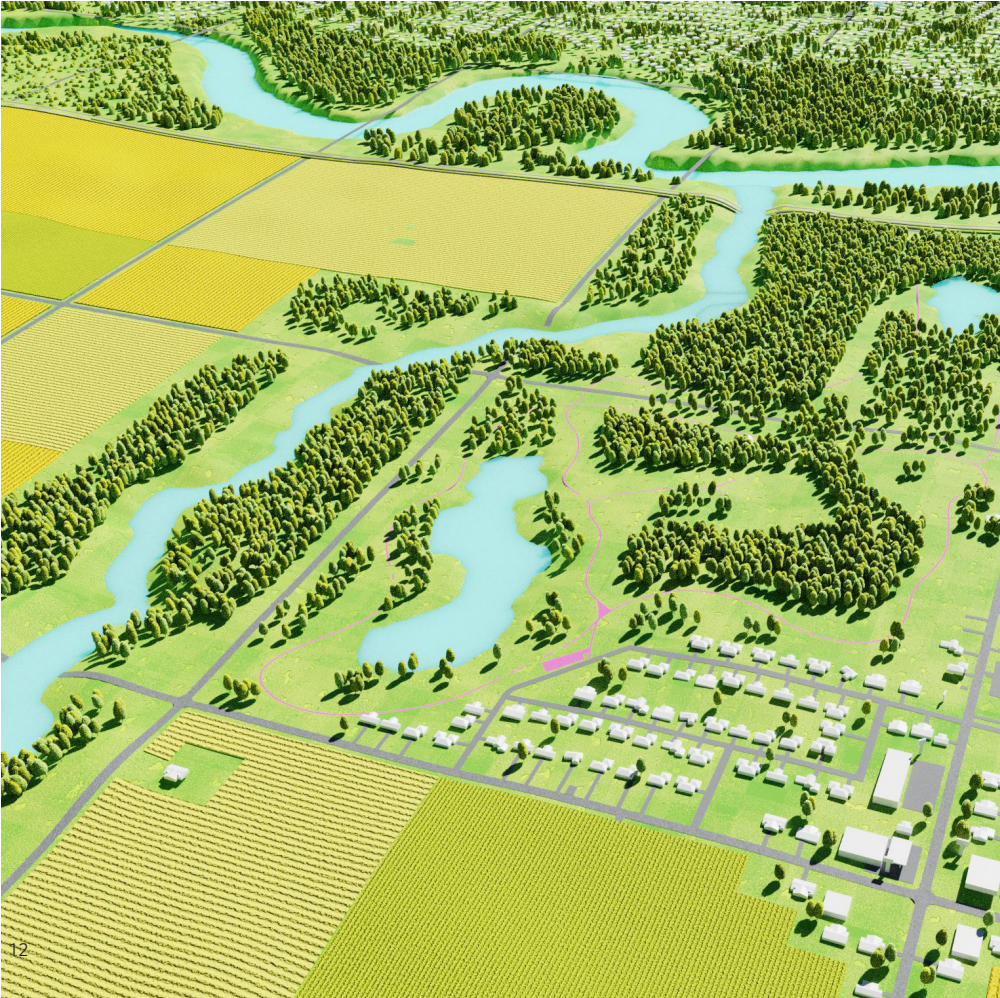
CMAP supports State of Illinois reform of economic development incentives to institute stronger standards for transparency and accountability, including regular audits, data releases, and sunset provisions.

CMAP supports State of Illinois efforts to incorporate regional goals and priorities into economic development investments and prioritize assistance or incentives that align with strategic planning.



Environment

The region's natural environment and resources are some of the most valuable and irreplaceable assets in metropolitan Chicago, contributing to a high quality of life and supporting a vibrant regional economy.



A region prepared for climate change

Climate change, manifesting in our region as more frequent and severe storms, extreme temperatures, and drought, is already significantly affecting our economy, ecosystems, built environment, and people. Increased flooding and heat strains our roads, rail, and other infrastructure. ON TO 2050 recommends intensifying climate mitigation efforts and reducing greenhouse gases, while at the same time preparing for and equipping communities to recover from the acute shocks and chronic stresses of climate change. Mitigation will require aggressive efforts to modernize our energy infrastructure and address emissions caused by transportation. Planning for climate change requires rethinking the region's green and gray infrastructure, as much of the region's roadway, water, and energy infrastructure was designed using standards that pre-date the increased number of heavy rain events, freeze-thaw cycles, and hotter and wetter conditions.



CMAP supports federal and state actions to bolster climate resilience by investing in a more flexible and decentralized electric grid, such as the Smart Grid Investment Grant Program.

CMAP supports State of Illinois coordination of funding, programming, data, and models for climate resilience among state environmental agencies — including the Illinois State Water Survey (ISWS), Illinois State Climatologist, Illinois Department of Natural Resources (IDNR), and Illinois Environmental Protection Agency (IEPA).

CMAP supports federal policy to uphold the U.S. commitment to the Paris Agreement, expanding renewable energy and efficiency programs, exploring market mechanisms for reducing greenhouse gas emissions, and transitioning to renewable resources.

CMAP supports State of Illinois implementation of the emissions reduction policies of the Future Energy Jobs Act and programs to promote energy conservation.

CMAP supports federal and state policies that enable the transportation system to reduce emissions, including electrification of commercial fleets and transit systems.

An integrated approach to water resources

The region's water resources play an essential role in sustaining economic prosperity, environmental health, and quality of life — yet the region's policies do not adequately reflect their real and inherent value. As a result, the region continues to suffer major flood damage and degraded water quality, while growth and development strains our drinking water supply. Access to clean and reliable water differs across the region, and water infrastructure investments lag behind public health needs. Policymakers must incorporate an integrated approach to water resources to keep the region's waters clean for people and wildlife, reduce flood risks, and coordinate and conserve shared water supply resources to ensure long-term sustainability.

CMAP supports State of Illinois development of a comprehensive state plan to guide programs that integrate water supply, water quality, stormwater, and aquatic habitat, and adequately fund the initiatives. CMAP supports State of Illinois coordination of data collection, tracking, and research for water resources and infrastructure among various agencies, including IEPA, IDNR, Illinois Department of Public Health, ISWS, Illinois State Geological Survey, Illinois Natural History Survey, watershed working groups, and other watershed organizations.

CMAP supports federal reforms to water quality and stormwater management that address non-point source pollution.

CMAP supports State of Illinois water infrastructure investments that promote safe drinking water, reduce water loss, increase resource recovery and closed-loop systems, improve the Illinois Clean Water Initiative, better support low resource communities in need, and implement water infrastructure asset management.

CMAP supports federal investments that maintain the health, recreational use, and economic benefits of Lake Michigan and the Great Lakes, such as the Great Lakes Restoration Initiative, Coastal Zone Management Program, Water Resources Development Acts, and efforts to prevent invasive species transfer.

CMAP supports federal and state reforms to modernize policies related to flooding, including making risk information available for property sales, and reforming the National Flood Insurance Program to develop long-term solutions for properties that are at high risk of flooding.

CMAP supports State of Illinois action to foster regional water coordination efforts modeled after the Northwest Water Planning Alliance to explore ways to coordinate withdrawals and management of shared water resources with neighbors.

Development practices that protect natural resources

Natural areas provide places for recreation, habitats for native flora and fauna, air pollutant filtration, flood reduction, urban heat island mitigation, and groundwater recharge, while at the same time creating more desirable, healthy, and resilient communities. The region's natural areas are threatened by development and climate pressures. Development continues to convert natural and agricultural land, fragmenting our open spaces. ON TO 2050 envisions a future where development practices and infrastructure embrace natural landscapes. The region needs policies that incentivize infill and reinvestment in communities, address contamination, and promote conservation of open space for the health of the natural and built environments. Policymakers should also consider tools such as CMAP's Flood Susceptibility Index, Conservation Areas Local Strategy Map, and the Green Infrastructure Vision to target environmental investments that meet multiple regional goals, including providing access to open space and mitigating flooding.

CMAP supports federal and state programs that encourage redevelopment and enable local governments to deploy sustainable development practices.

CMAP supports federal and state action to address environmental challenges that disproportionately affect specific populations and disinvested areas.

CMAP supports federal and state protection and stewardship of high-priority natural areas by continuing to fund IDNR and land managers via the Open Space Lands Acquisition Development (OSLAD) Program, the Natural Areas Acquisition Fund (NAAF), and the Coastal Management Program.

CMAP supports federal and state innovative financing mechanisms to support open space protection and enhancements.

CMAP supports State of Illinois expansion of conservation efforts through land trusts and conservation easements, and development of a statewide policy for conserving agricultural lands.

CMAP supports State of Illinois expansion of programs that promote sustainable agricultural practices, encouraging crop diversity and protecting water resources.

Governance

Effective governance requires collaboration between governments at every level, adequate resources for addressing today's challenges, and data-driven decision making to seize on tomorrow's opportunities.



Collaboration at all levels of government

Disjointed, siloed approaches to governing hinder the region's ability to prosper. State policies must ensure local governments can achieve the goals of better governance, reduced costs, and improved service delivery. Strategies should provide local governments with innovative tools to solve problems, improve intergovernmental collaboration, and facilitate well informed exploration of options like consolidation, where appropriate. State policymakers should also consider taking more direct action to facilitate partnerships and mergers where locally desired. Several other states have funded local feasibility studies on consolidation and service sharing with the goals of improving services or reducing local tax burdens, and Illinois should follow suit.

CMAP supports the State of Illinois providing assistance for local government service sharing and consolidation by conducting feasibility studies, sharing best practices, and addressing legislative barriers.

CMAP supports the State of Illinois providing financial support for local government consolidation based on well-defined criteria, such as offsetting short-term property tax differentials or other associated expenses for transition.

CMAP supports the State of Illinois appropriating consistent, adequate revenues to sustain all of CMAP's comprehensive planning activities, including water resources management, climate resilience, economic development, local capacity, and other ON TO 2050 priorities.

CMAP supports federal funding for the implementation and expansion of programs such as the U.S. Department of Housing and Urban Development's former Sustainable Communities Initiative that link planning and investment decisions across disciplines.



Capacity to provide a strong quality of life

State and local governments must take steps to improve their near-term fiscal condition and long-term outlook. Policymakers should develop tax policies that strengthen communities and the region, and commit to sound budgeting practices to stabilize local government revenues. The state tax code must be modernized to reflect current consumer trends — such as the use of services rather than goods and purchase of goods online — and to better represent the multijurisdictional nature of the region's many industrial and office employment areas.

CMAP supports State of Illinois efforts to modernize the tax code to better reflect the changing economy, including by expanding the sales tax base to additional services.

CMAP supports the State of Illinois assigning non-home rule municipalities more authority to implement user fees, such as motor fuel taxes or fees to address freight needs, in order to provide services and maintain infrastructure.

Data-driven and transparent investment decisions

Basing decisions at all levels of government on transparent, accountable practices that direct public investments based on performance goals and data helps extend limited resources. Budgetary and programming decisions are still too frequently made without adequate transparency or prioritization based on need. Performance-driven investments will enable the region to manage assets, provide services, and support infrastructure; however, that approach requires complete, accessible, standardized, and high quality data. Data provided by state agencies, the U.S. Census Bureau, and other federal agencies are crucial to understanding regional and local trends and conditions. However, the data necessary to assess transportation system's needs, such as freight and goods movement or data from other private transportation providers, is also unavailable to planners.

CMAP supports state and federal efforts to collect comprehensive data and facilitate open exchange of data by applying best practices and technological improvements.

CMAP supports state and federal policies to facilitate adequate access to private data sets that can improve transportation programming decisions and policies.

CMAP supports state and federal legislative and administrative initiatives that ensure the U.S. Census Bureau can conduct an accurate and complete count in the 2020 Census.

Mobility

The transportation network of metropolitan Chicago has reached a critical juncture — bold steps must be taken to address today’s problems and anticipate opportunities for achieving a well-integrated, multimodal transportation system.



A modern, multimodal system that adapts to changing travel demand

People have more options for moving around the region than ever before — from rideshare companies like Uber and Lyft to Divvy bikeshare service and automated vehicle technologies that are just over the horizon. These still nascent technological trends will continue to intersect with economic and demographic shifts to transform how residents and businesses want to use the region's transportation system in coming decades. Although technology has facilitated movement throughout the region, transportation technology policies should complement transit and allow users to move between modes. And reforms should focus on providing the necessary funding and policy changes to make transit more competitive. Initiatives must also keep freight top of mind — recognizing the region's role in moving goods locally and nationally — while mitigating potential negative effects on communities.



CMAP supports federal and state policies that harness technology to improve travel and anticipate future impacts by identifying ways to leverage provision of more detailed data and analysis from private companies while carefully protecting riders' privacy.

CMAP supports federal action to establish technology standards for connected and automated vehicles that can enable long-range infrastructure planning and safety analysis by local and regional jurisdictions.

CMAP supports federal and state investments and reforms to make transit more competitive by diversifying and increasing funding sources for transit.

CMAP supports state legislative initiatives that require IDOT and the Illinois Tollway to implement congestion pricing on new roads or lanes, and allow them to strategically price components of the existing highway network, including congestion pricing for new managed lanes on I-55.

CMAP supports federal and state expansion of funding for the freight network, including important Chicago Region Environmental and Transportation Efficiency (CREATE) program projects, such as completion of the 75th Street Corridor Improvement Project.

A system that works better for everyone

Though boasting the second-largest transit system in the nation, critical parts of metropolitan Chicago remain inaccessible to residents. Policymakers must commit to funding and supporting a system that works for the entire region. This includes wide ranging and interconnected issues such as bicycle and pedestrian safety, access to economic opportunity for low income and minority residents, expanded travel options for seniors and people with disabilities, and the adaptations necessary to respond to a changing climate. Special attention must be paid to leverage transportation and infrastructure investments to promote inclusive growth. Transportation can play a key role in creating pathways to opportunity for low income communities, people of color, and people with disabilities. Low income residents in the Chicago region use all modes of transportation to get around, yet are often burdened by some of the longest commutes in the region.

CMAP supports state and federal efforts to build capacity for disinvested communities to develop, fund, and maintain transportation infrastructure.

CMAP supports state and federal policies and funding to pilot new options to reduce the commute times of low income residents.

CMAP supports State of Illinois policies and programs to enhance travel safety by improving incident detection and management, developing better bicycle and pedestrian accommodations, improving driver training, and collecting better and more complete safety data, among other efforts.

CMAP supports state and federal reforms that enable IDOT, the Illinois State Police, the Tollway, and municipal and county agencies to implement automated speed limit enforcement programs, in a transparent and accountable manner that protects the public interest particularly with concern to privacy and equity.

Making transformative investments

Northeastern Illinois must invest in maintaining and enhancing the transportation system to keep up with demand and promote regional economic vitality. Today's funding mechanisms are also outmoded: In the near term, policymakers will need to raise motor fuel taxes and empower local communities and regions across the state to raise their own revenues, while exploring new strategies to collect sustainable and adequate revenues in the future. With limited dollars available, transportation decision makers should continue to implement data-driven programming practices that emphasize selection of projects that meet clear regional objectives for transportation, land use, environment, and the economy.

CMAP supports State of Illinois action to establish adequate and sustainable multimodal capital funding.

CMAP supports State of Illinois furthering its progress on transparent, performance-based allocation of revenues.

CMAP supports the State of Illinois increasing the motor fuel tax (MFT) by at least 15 cents per gallon and indexing the rate to an inflationary measure until a new revenue source is available to replace it.

CMAP supports the State of Illinois beginning necessary steps — including a pilot project — to replace the MFT with a per-mile road usage charge of at least 2 cents per mile, indexed to an inflationary measure.

CMAP supports the federal government increasing the gas tax rate, indexing it to an inflationary measure, and in the long term replacing it with a per-mile road usage charge. The federal government should also work with states to develop a national solution to implementing road usage charges at the state level.

CMAP supports the State of Illinois expanding the sales tax to additional services to provide additional funding for transit.

CMAP supports State of Illinois initiatives that allow enactment of revenue sources for the seven-county CMAP region to meet its own transportation needs and provide local communities with the tools and authority to raise their own transportation and infrastructure revenues, including broader taxing authority for the Regional Transportation Authority.

Making transformative investments (continued)

CMAP supports state and federal initiatives that broaden authority to implement tolling and allow toll revenue to be flexibly used for multimodal transportation system goals.

CMAP supports State of Illinois efforts to permit and encourage innovative transportation funding and financing sources such as value capture and strategic use of public-private partnerships in a transparent manner that protects the public interest.

CMAP supports federal implementation of a cost of freight service fee — a sales tax on the cost of shipping freight — at the national level.



Service Suspended
Howard * < 1 min
Howard * 6 min

95/Dan Ryan 9500 S
OE/OW

About CMAP

The Chicago Metropolitan Agency for Planning (CMAP) was created in 2005 by state statute (70 ILCS 1707) and its Policy Committee is the federally designated Metropolitan Planning Organization (MPO) for the seven counties of Cook, DuPage, Kane, Kendall, Lake, McHenry, and Will plus portions of Grundy and DeKalb. Its state and federal mandates require CMAP to conduct comprehensive regional planning, prioritize transportation investments, provide technical assistance for communities, and compile data resources that enhance decision making.

CMAP developed and now guides implementation of the region's ON TO 2050 comprehensive plan, which was adopted in October 2018 by leaders from across the seven counties. ON TO 2050 is an innovative, policy-based plan that establishes coordinated strategies to help the region's 284 communities address transportation, economic development, open space, water, energy, housing, and other quality-of-life issues. Three principles guide the plan and unify the goals and implementation strategies: Inclusive Growth, Resilience, and Prioritized Investment.

Implementation of ON TO 2050 is CMAP's main priority. The agency provides extensive support to communities through its Local Technical Assistance (LTA) program. So far, CMAP has initiated more than 220 LTA projects in which counties, municipalities, and nongovernmental organizations are planning for increased livability, sustainability, and economic vitality. The program helps address significant demand in the region for updating local comprehensive plans, ordinances, and related planning activities. Though its three-year U.S. Department of Housing and Urban Development grant expired in December 2013, CMAP has continued the LTA program with funding from the Illinois Environmental Protection Agency and Cook County Community Development Block Grants, among other sources.

ON TO 2050 recommendations guide the allocation of federal transportation dollars in northeastern Illinois through the following programs that CMAP administers:

- The Congestion Mitigation and Air Quality Improvement program supports surface transportation improvements, with \$226 million programmed over five years (federal FY 2018-22) and a new call for projects announced in January 2019.
- The local Surface Transportation Program was developed through coordination with subregional Councils of Mayors and the City of Chicago, with \$171 million obligated in federal FY 2018. A new Shared Fund for projects that make large and lasting contributions to regional transportation priorities announced its first call for projects in January 2019. The subregional councils will have their next calls for projects in 2020.
- The local Transportation Alternatives Program supports non-motorized transportation in the region, with \$30 million approved in the most recent three-year cycle (federal FY 2018-20), and a new call for projects announced in January 2019.
- The Transportation Improvement Program (TIP) accounts for these, and all federally funded and otherwise regionally significant projects, totaling \$13 billion, from federal FY 2019-23.

CMAP conducts extensive, data-driven research and analysis related to policy objectives contained in ON TO 2050, including diverse economic factors such as workforce, innovation, and state and local tax policies. CMAP helps to coordinate efforts to build partnerships involving the institutions that provide education and training and the industries that need a reliable pool of middle- and high-skilled workers. CMAP's research also has shed light on the impacts of state and local tax policies.

Contact

Melissa Porter
Chief of Staff
312-386-8662
mporter@cmmap.illinois.gov

Gordon Smith
Director of Governmental Affairs
312-386-8739
gsmith@cmmap.illinois.gov

233 South Wacker Drive, Suite 800
Chicago, Illinois 60606

312-454-0400

info@cmap.illinois.gov

www.cmap.illinois.gov